

Cleveland Anti-Slavery Network

Cleveland-wide Victim Care Pathway

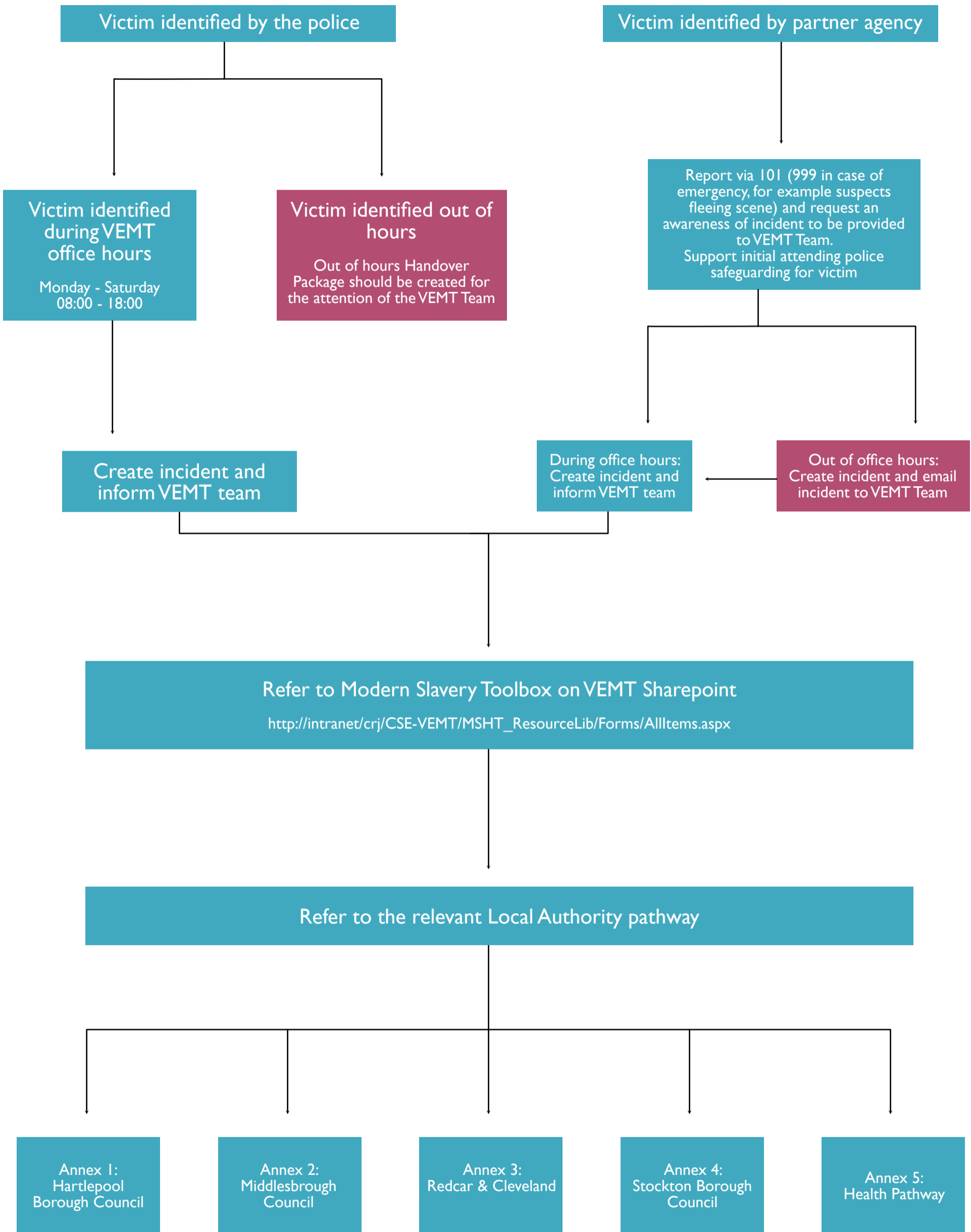


“I was particularly interested in the Network’s Victim Care Pathway, and I look forward to working closely with the PCC’s Office in future to learn from and share such examples of best practice.”

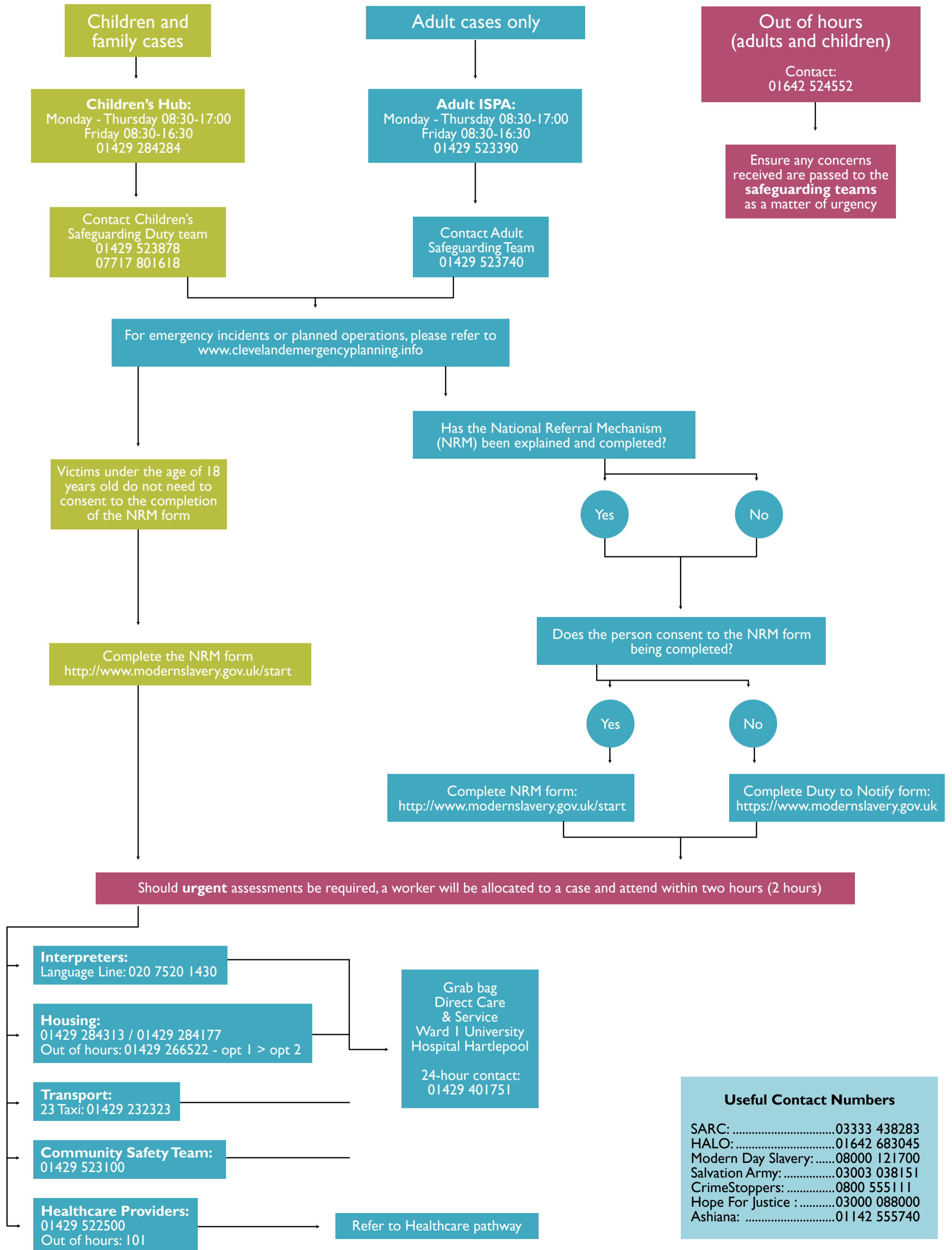
Dame Sara Thornton - UK Independent Anti-Slavery Commissioner



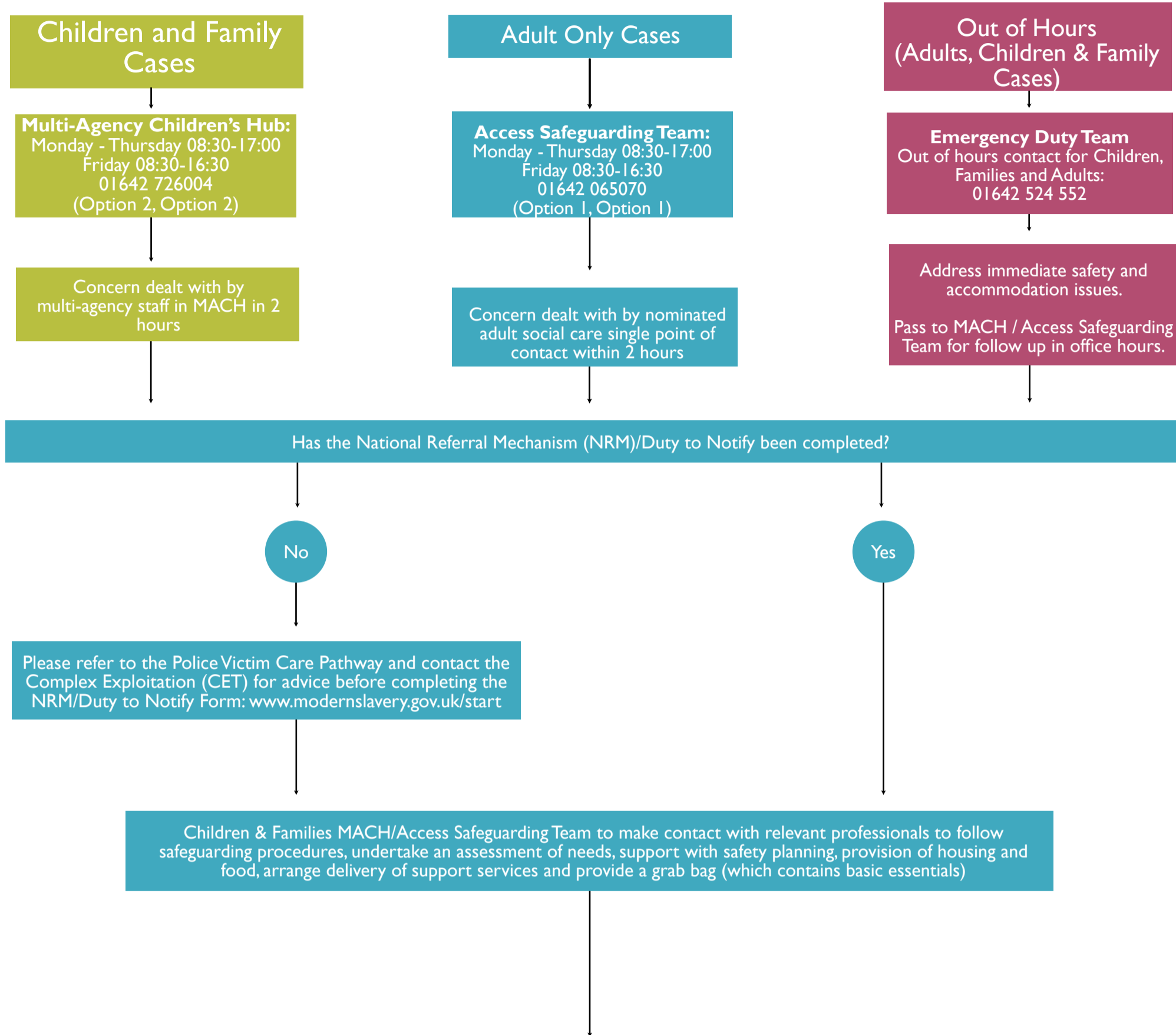
Modern Day Slavery and Human Trafficking Victim Care Pathway



Hartlepool Borough Council Victim Care Pathway



Middlesbrough Council Victim Care Pathway



Survivor Reception Centre to be arranged if a number of victims are rescued
Emergency Planning: 01642 301515

Middlesbrough Food Bank:
07934 131337

Substance Use Support Services:
Foundations - 01642 354550
Change Grow Live - 01642 876323

Interpretation Services:
Everyday Language Solutions
01642 603203*
*(*Please note the police should approve the use of any local interpretation service)*

Accommodation Support
Thirteen Housing
0300 111 1000

Victim Care:
Victim Care and Advice Service - 0303 040 1099

Healthcare Support:
South Tees NHS Foundation Trust Safeguarding Team - 01642 850850 x52241.
For CCG, refer to the Health Victim Care Pathway

Mental Health Support/ Assessment:
Mental Health Lead Officer/AMHP Lead Adult Social Care - 01642 579200.
Tees Esk and Wear Valleys NHS Foundation Trust Middlesbrough Access Team (non-urgent, 9am -5pm) 01642 579200.
Middlesbrough Crisis/Crisis Assessment Suite (urgent referrals, 24-hour) 01642 680706/837340

Sexual Violence Support services:
Teesside Sexual Assault Referral Centre (SARC) - 03333 448283
Arch North East - 01642 822331
STAGE Project - 01642 655071

Asylum Support:
Migrant Help - 0808 800630

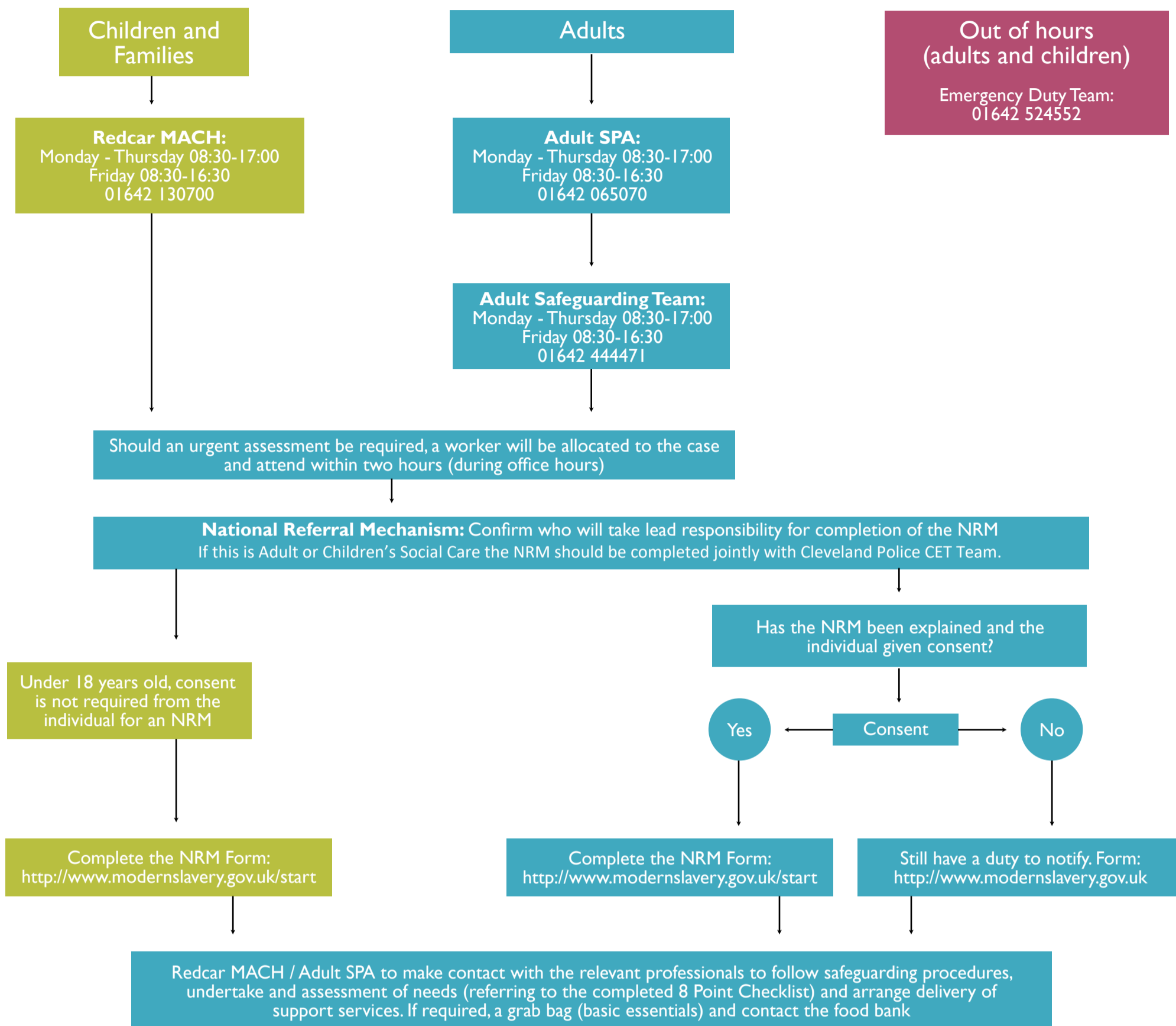
Middlesbrough Council Community Safety Team:
01642 228500

Honour Based Violence / Forced Marriage / FGM / Domestic Abuse:
HALO - 01642 683045
Harbour - 0300 0202525
My Sister's Place - 01642 241864

NRM Agency Support:
Salvation Army: 03003 038151
Ashiana: 01142 555740

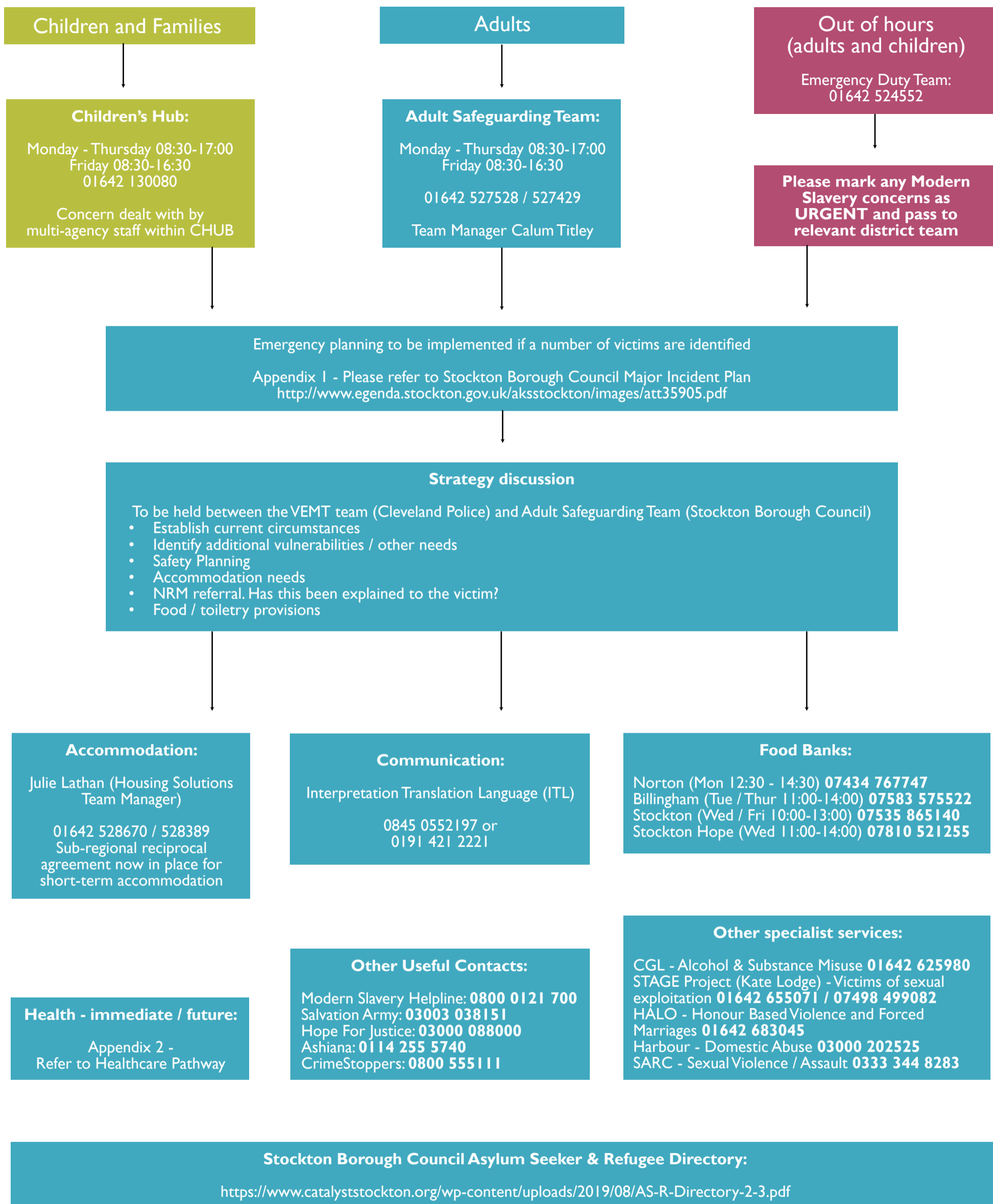
Please note, there is an expectation that within office hours, Monday to Friday, local agencies will respond to a request for support within 2 hours

Redcar and Cleveland Borough Council Victim Care Pathway



- | | | |
|---|--|--|
| <p>Health Care Support:
South Tees NHS Foundation Trust —
Safeguarding Team — 01642 850850 (extension 52241)</p> <p>Substance Misuse Support:
We Are With You — 0300 3033781</p> <p>Mental Health Support:
CAMHS — 03000 132000 opt 3
Adult Mental Health — 01642 838333</p> <p>Physical / Sexual Abuse:
HALO Project — 01642 683045
(Honour based violence, forced marriage, FGM)
ARCH North East — 01642 822331
(Sexual violence support service)</p> | <p>Useful Numbers</p> <p>SARC North East— 03333 44 8283
(Teesside sexual assault referral centre)</p> <p>Reporting Crimes:
Immediate Danger —999
Concerns —101</p> <p>Safeguarding Support / Investigation:
Police CET Team — 01642 303240
Community Safety Team — 01642 444679</p> <p>Accommodation Services:
Housing Advice and Information Team — 01287 612444</p> | <p>Interpretation Services:
Everyday Language Solutions — 01642 603203</p> <p>Transportation Services:
Integrated Transport — 01642 444974 / 444998</p> <p>Professional Advice and Support:
Hope for Justice — 0300 008 8000
Modern Slavery Helpline — 0800 0121 700</p> <p>Help for Victims / Migrants / Asylum Seekers:
Salvation Army — 03003 038151
Ashiana — 01142 555740
Migrant Help — 0808 8010 503
Victim Care & Advice Service — 0303 040 1099</p> |
|---|--|--|

Stockton-on-Tees Borough Council Victim Care Pathway





Support Agencies Across Cleveland and National

Name	Contact	Overview of Support
Modern Slavery Human Trafficking Unit Tactical Advisors	0844 7782 406	24/7 advice, support and expertise to police officers
Child Trafficking Advice Centre (CTAC)	0808 800 5000	Specialist support for child victims of modern slavery
Hope For Justice	03000 088000	Outreach teams, training providers
VCAS (Victim Care and Advice Service)	0303 040 1099	Post NRM support, outreach service, DWP support
HALO	01642 683045	Specialist cultural support
Ugly Mugs	0161 629 9861	Intelligence service for sex workers
Medaille Trust	0800 06 999 16	Support service
Salvation Army	0300 303 8151	24/7 helpline - NRM referral service (national NRM service provider)
Ashiana, Sheffield	01142 555740	Support service
Sexual Assault Referral Centre (SARC)	0333 344 8283	24/7 self-referral service for rape / sexual assault
CrimeStoppers	0800 555111	24/7 helpline
Modern Day Slavery Helpline	08000 121 700	24/7 helpline
Migrant Help UK	0808 8010 503	24/7 helpline
Gangmasters and Labour Abuse Authority (GLAA)	0800 432 0804	Confidential reporting line, Monday to Friday, 9-5pm